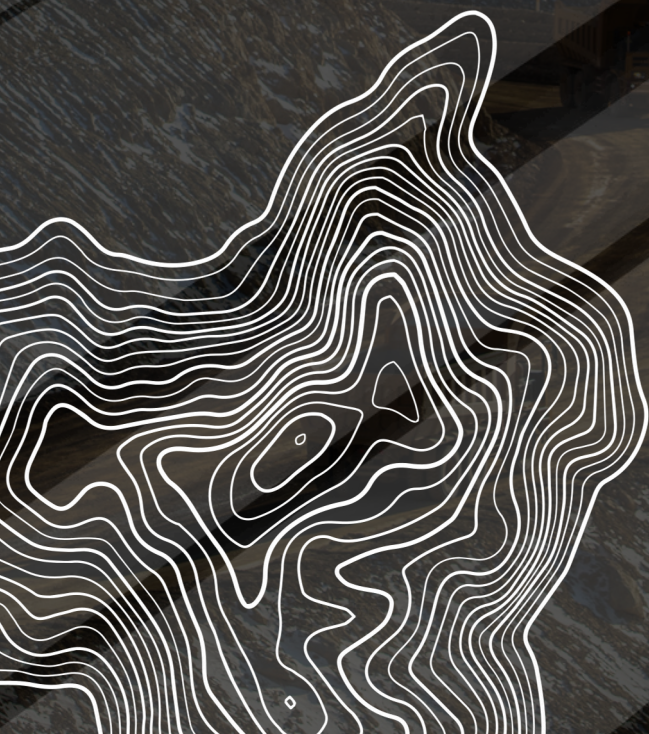




KHAN ALTAI GOLD PROJECT
THE BIGGEST GOLD DEPOSIT
IN MONGOLIA





01 ABOUT US

02 RESOURCE

03 OUR HISTORY

03 SUSTAINABILITY



ABOUT US

Khan Altai gold deposit locates in Yesonbulag, Gobi-Altai province, Mongolia, 1,000 km west from Ulaanbaatar capital.

The deposit is considered as the biggest in the country with its geological resource which is **4.2 Moz (131.72t)** of JORC complied gold reserve with the potential to increase as the exploration has not been finalized as of August 2023. The resource estimation reports have been developed by SRK Consulting RPM Global since 2019 which complies JORC code.

OUR VISION

Our aim is to establish ourselves as the foremost and renowned mining company in the nation.

OUR MISSION

We are committed to constructing a sustainable and socially responsible gold mine, positioning us to compete globally, while contributing to the development of Mongolia's western region.

A CORE VALUE

Respect for both humanity and nature.



1,000 km

from Ulaanbaatar city

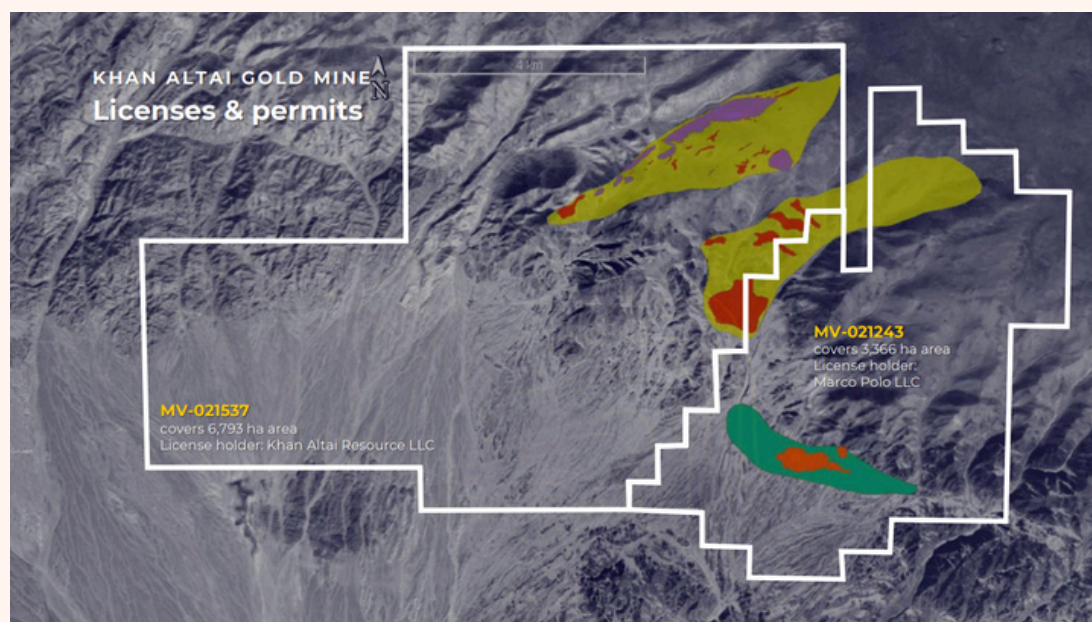
100 km

from Altai city

The mine locates in Yesonbulag, Gobi-Altai province in western Mongolia, **100km** southeast from Altai city.



MV-021537 mining license is issue for 30 years in 2020 valid until **2050** which covers **6,793**-hectare area



Phase I Operation

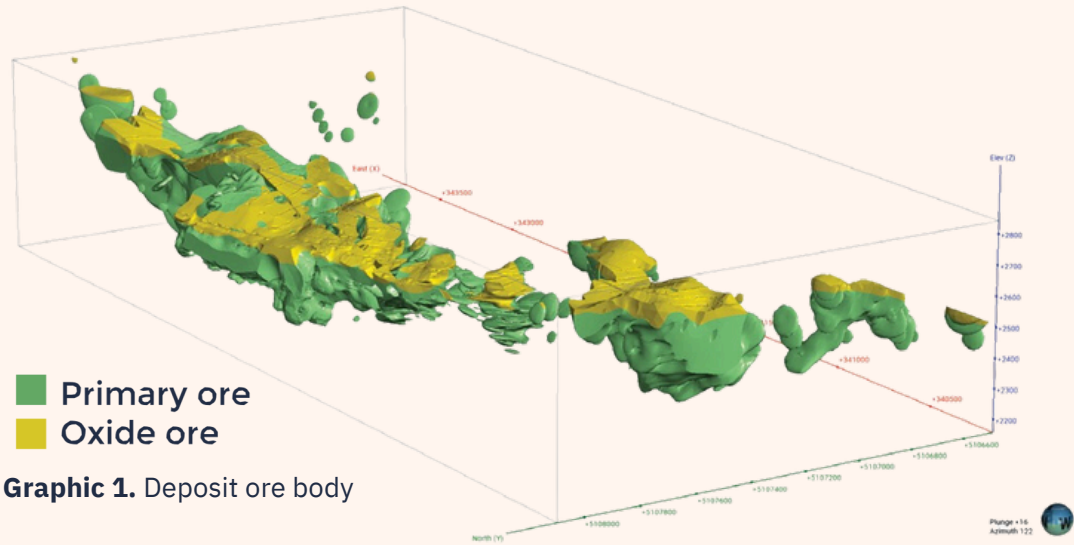
4 Mtpa oxide ore processing operation

The biggest heap leaching operation in Mongolia is taking place at Khan Altai gold mine with the annual gold production estimate of 1.9 t of gold.

Phase II Operation

6 Mtpa primary ore processing operation

The mined primary ore shall be crushed and ground to 75µm for the flotation process. The concentrates shall be processed in oxidation followed by leaching process to produce gold.



144.72 Mt

Ore resource based on 146,395 m drill data of 543 drill holes as of September 2023.

707 g/t

highest Au content identified.

4.2 Moz

Au resource (131.72 t) with average grade 0.91 g/t.

36,000 M

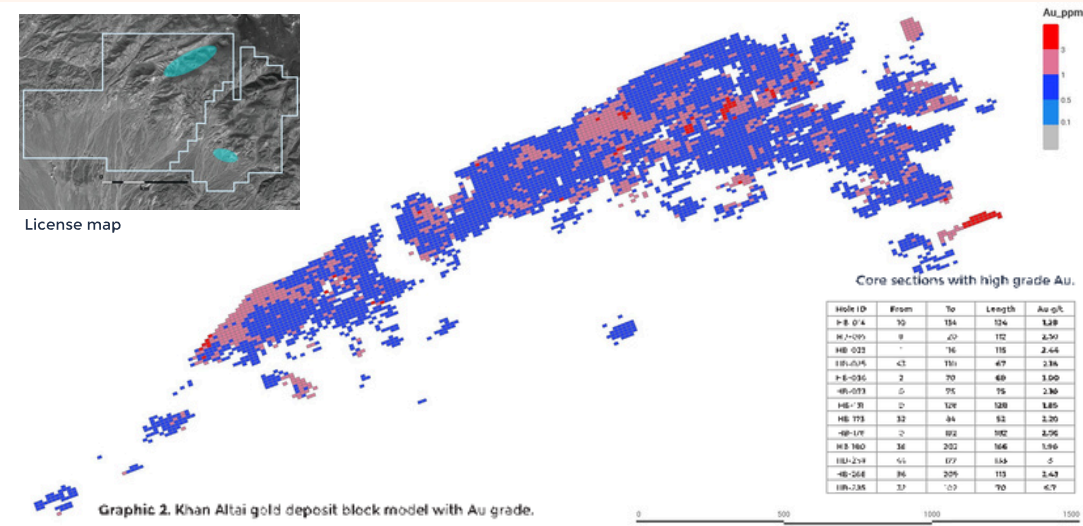
of additional drill program is planned for 2024.

Resource

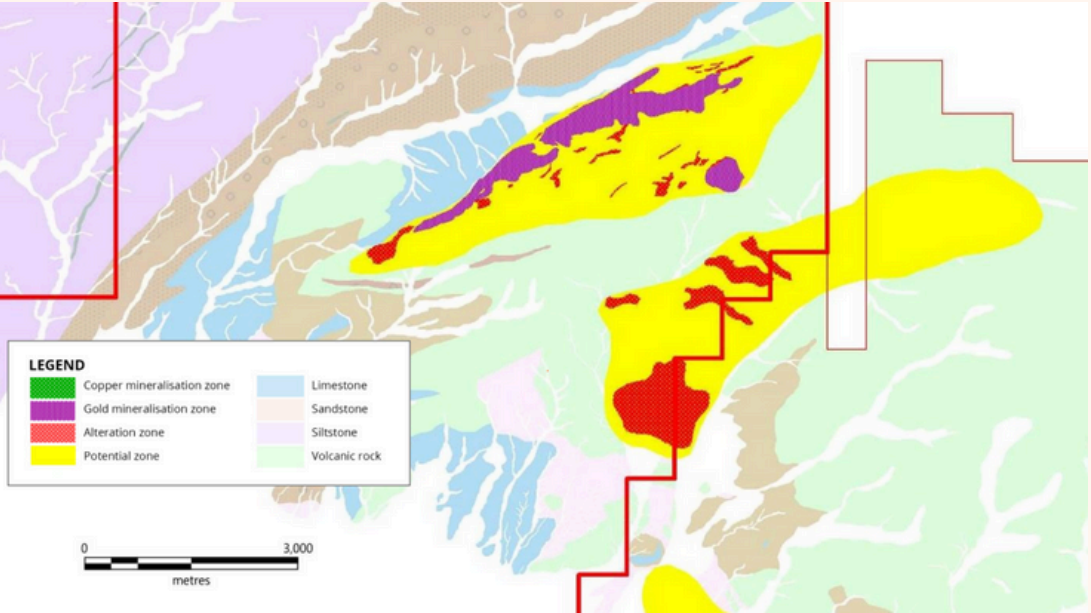
Grade tonnage table for Khan Altai gold deposit:

Au cut-off grade (g/t)	Tonnage (t)	Average grade (g/t)	Contained Au (t)	Contained Au (Moz)
0	406.26	0.47	192.02	6.17
0.1	396.65	0.48	191.16	6.15
0.2	301.45	0.58	176.27	5.67
0.3	203.97	0.75	152.17	4.89
0.4	144.72	0.91	131.72	4.23
0.5	108.24	1.07	115.44	3.71
0.6	83.82	1.22	102.11	3.28
0.7	66.68	1.36	91.02	2.93
0.8	53.32	1.52	81.02	2.60
0.9	43.54	1.67	72.73	2.34
1	36.85	1.80	66.38	2.13
2	9.27	3.10	28.76	0.92
3	2.82	4.76	13.41	0.43
4	1.28	6.40	8.21	0.26
5	0.70	8.05	5.63	0.18

Khan Altai Resource LLC, the mining license holder, develops the project in two phases. Phase I operation has already commenced operation in November 2022 with the processing capacity of 3 Mtpa heap leach operation. In 2024, the capacity will be increased to 4Mtpa. Phase II operation targets the primary ore processing with 6 Mtpa processing capacity which is targeted to commence the operation by 2026.



The highest grade identified in the drill core as of today is 707 g/t Au in the primary ore. The average drill depth is about 300 m where the continuation of the ore body is open towards the depth.



144.72 Mt

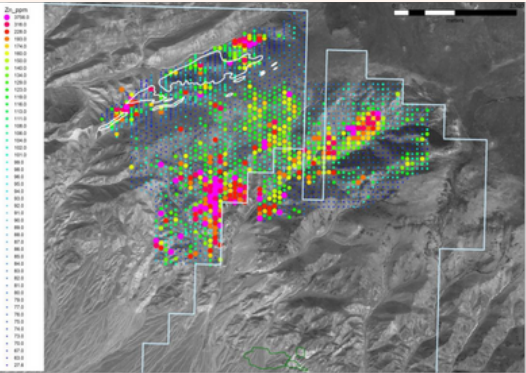
Ore resource based on 146,395 m drill data of 543 drill holes as of September 2023.

116,000

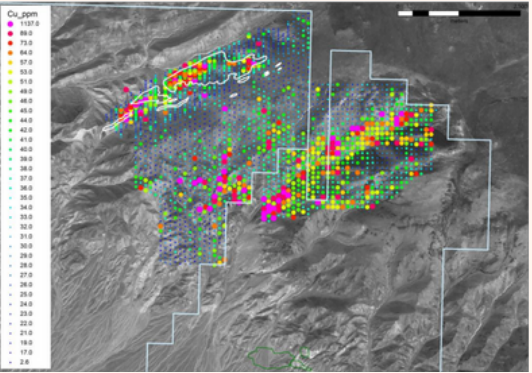
core samples

60% of the potential mineralisation zone is drilled as of November 2022

Zn



Cu



Polymetallic mineralization zone
Copper and zinc mineralization zones

Our history

“Khan Altai Resources LLC” is wholeheartedly committed to advancing and revitalizing the mining industry in Mongolia’s remote western regions. Our primary focus lies in the exploration and responsible development of substantial gold deposits, contributing to the sustainable growth and prosperity of the region while adhering to the highest standards of environmental and social responsibility.

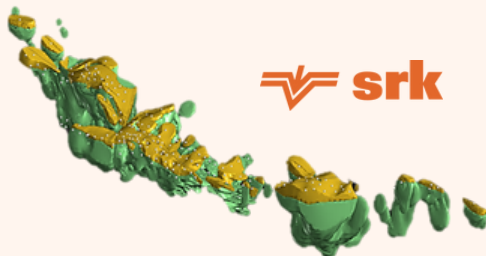


2018

- Discovery Khan Altai Gold Deposit

2019

- JORC technical review on the exploration prepared by SRK Consulting
- Metallurgical test work was completed in ALS Metallurgy Australia
- Resource calculation was registered at MRPAM



2020

- JORC resource was calculated at 41.5 tn of gold (1.33 M Oz) by SRK Consulting
- Received MV-021537 mining license
- Completed the specifically designed technological roads for haul tracks at mine site
- Oxide ore resource was calculated & registered at MRPAM
- Completed 38,000 m of drill work



2021

- JORC reserve report was updated
- Undertook an “Environmental impact assessment”
- Completed 40,000 m of drill work
- Construction of ADR plant, camp and infrastructure sub-projects have started



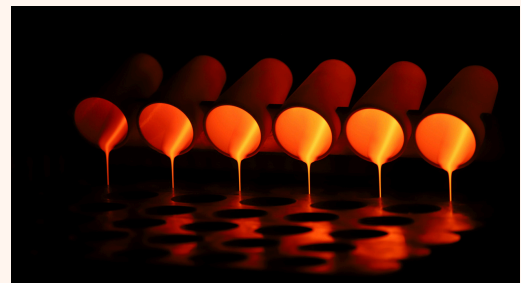
2022



- Commissioned Reagent storage
- ADR Plant – State commissioning completed
- Started ore crushing and heap leaching process
- Flotation test of primary ore
- 28,725 m drill work completes

2023

- Started gold production
- Ongoing construction of Camp, SOS Office, Laboratory and HME truck shop
- Heap Leaching Pad cell 7 to 9 development
- Exploration for increasing resource
- 50,000 m of drill program to be completed



2024



- Stationery crusher with capacity of 4 million tons
- Improve mining capacity and crushing fleet
- Flotation plant project
- Preparations and permits for construction of processing plant of primary ore



Power line

Connected to state grid with 35 kV power line



LTE support

Connected to the cellular network with LTE support at the project site



Storage

Commissioned explosives and chemicals storage facilities and maintenance shop

Electricity

Set up diesel generators with 3.7 MW generation capacity which can supply the electricity consumption of ADR processing plant



Camp

290-man camp facilities that include SOS, office, gym, restaurant and living accommodations



Fuel

1 t fuel storage station which store up to 1 week fuel consumption of Phase I operation



LOCAL DEVELOPMENT PROGRAM



Local business
development program



Infrastructural
development program



Health and education
development
program



Cultural heritage
promotion program



Participatory
environmental
monitoring program

WE ARE IMPLEMENTING **5 SUBPROGRAMS** AND **14 OBJECTIVES**

“

The program's objective is to align with Mongolia's laws, regulations, and standards, while promoting social responsibility within Khan Altai Resources LLC. It aims to foster safe, transparent, and responsible mining practices, drive sustainable economic development in the local area, enhance educational opportunities for citizens, and create a healthy, secure living environment.

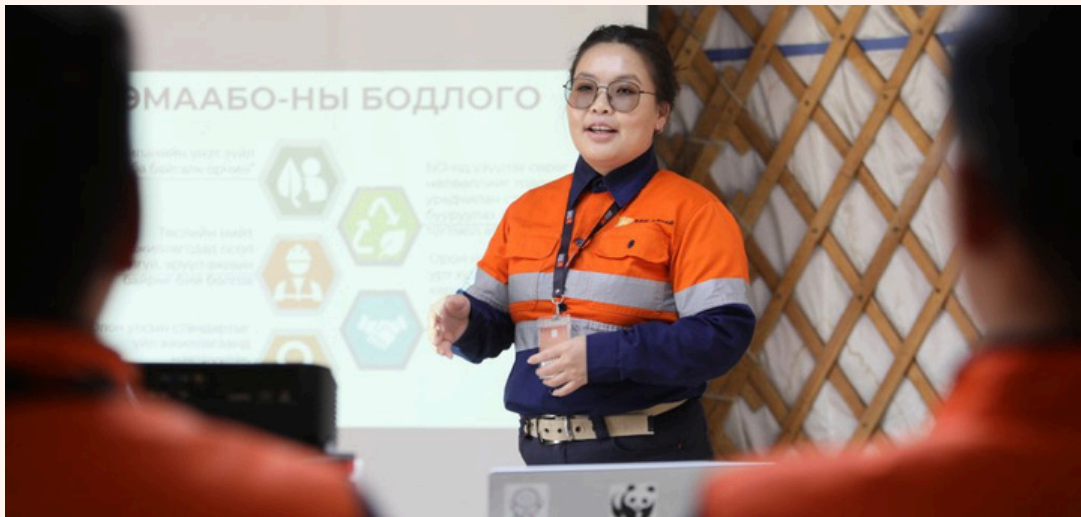
Additionally, it seeks to actively contribute to infrastructure development, nature conservation, and engage in monitoring and analysis through citizen participation.

This program will be executed in Yesonbulag Sum, Gobi-Altai Province, and will be carried out in both short and long-term phases, in alignment with the input and perspectives of the Sum's governor, local residents, and the broader development plan for the province and Sum.



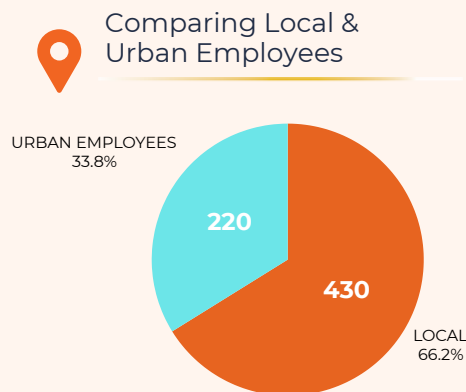
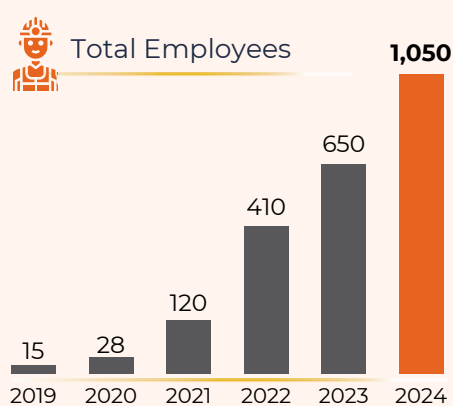
Empowered workforce

Our approach aligns with Khan Altai Resources’ Mission, Values, Vision, and Business Ethics, fostering positive relationships and attitudes within the company. Our human resource policy is designed to attract, cultivate, and retain a qualified, skilled, and stable workforce.



We aim to create a conducive work environment where each employee can harness their full potential, receive ongoing support for their endeavors, suggestions, initiatives, and creative ideas. We provide opportunities for continuous learning and development and promote teamwork and collaboration among our colleagues.

Khan Altai Resource LLC comprises of entirely Mongolian workforce, with the regional employees account for 66% of the total 650 employees.





Scan for web site.



Khan Altai Resource LLC

17th Floor, M Plaza, Sambuu Street
24 Ulaanbaatar 15141, Mongolia

www.khanaltai.mn

